

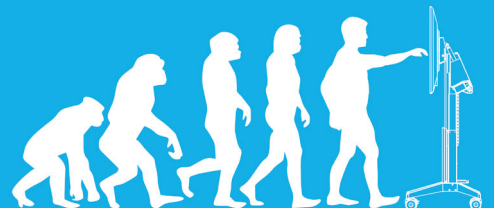


SALAMANDER
DESIGNS
Furniture Shaped By Your Needs ®



INTERACTIVE FURNITURE

Salamander professional grade furniture systems seamlessly integrate with touch screens to offer a new level of function, flexibility, and style to collaborative workspaces.



MOBILE STANDS Electric Lift



ADA
COMPLIANT
SOLUTIONS



FPS1XL/EL/GG XL Electric Lift Mobile Stand

Holds 60-90", 300 lbs (136 kg)
& 84" Microsoft Surface Hub

VESA Compliant:
Horizontal 400, 600, 800, 1000, 1200mm
Vertical 400, 500, 600mm



FPS1/EL/GG Electric Lift Mobile Stand

Holds 42-65", 175 lbs (79 kg)
& 55" Microsoft Surface Hub

VESA Compliant:
Horizontal 200, 300, 400, 600mm
Vertical 200, 300, 400mm



FPS1/EL/CS/GG Cisco Spark Board Electric Lift Mobile Stand

Holds Cisco 55" Spark Board

Holds 55" / 70" w/ adapter
Weight Capacity: 175 lbs (79 kgs)

FPS1XL/EL/GG is easily adaptable to be used with the Cisco 55" Spark Board using the CA/MAC1 kit.

Electric Lift & Tilt



ADA
COMPLIANT
SOLUTIONS



FPS1/ELT/GG Electric Lift & Tilt Mobile Stand

Holds 42-65", 175 lbs (79 kg)
and 55" Microsoft Surface Hub*

VESA Compliant:
Horizontal 200, 300, 400, 600mm
Vertical 200, 300, 400mm

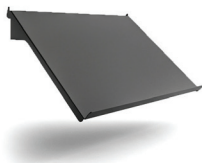
**When used with the Microsoft Surface Hub, please contact us for custom tilt programming*



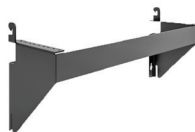
ELECTRIC MOBILE STANDS FEATURES & ACCESSORIES



ACCESSORIES



Keyboard Storage Shelf
FPSA/KS/GT



Rack Mounting
Equipment Bracket
FPSA/VR/3U



Retractable Power
Cable Reel
FPSA/CR



Power Distribution Unit,
9 Outlets
SA/RM/PDU



Secure Equipment
Storage Cover
FPSA/SC/GT



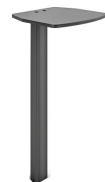
Small Shelf with
Mounting Straps
FPSA/AS1



Wireless Remote
Control with Memory
FPSA/RF1



Speaker Bracket
FPSA/SBK



Camera Shelf
FPSA/CS

MOBILE STANDS Fixed Height



Fixed height, mobile stands were designed to meet your needs, these stands deliver sleek design, functionality and mobility.

Adjustable Height Position
set during assembly

Large Handles
provide superior stability and maneuverability

Secure Rear Panels
allow for easy access to concealed storage with strap mounted peripherals

2RU Vertical Rack
with interior cable management

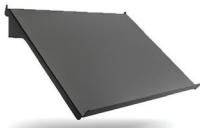
Premium Casters
provide smooth transport over any surface

Vents allows for airflow of peripherals

External Storage
accessible storage cubby on front (FPS1/FH/GG model)

Accessories Include:
a retractable cable reel, rear attaching shelf for laptops and keyboards, speaker mount and camera shelf

ACCESSORIES



Keyboard Storage Shelf
[FPSA/KS/GT](#)



Rack Mounting Equipment Bracket
[FPSA/VR/3U](#)



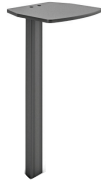
Retractable Power Cable Reel
[FPSA/CR](#)



Power Distribution Unit, 9 Outlets
[SA/RM/PDU](#)



Speaker Bracket
[FPSA/SBK](#)



Camera Shelf
[FPSA/CS](#)

MOBILE STANDS Fixed Height



ADA
COMPLIANT
SOLUTIONS



FPS1XL/FH/GG

XL Fixed Height Mobile Stand

Holds 60-90", 400 lbs (181 kg) and
84" Microsoft Surface Hub

VESA Compliant:

Horizontal 400, 600, 800, 1000, 1200mm
Vertical 400, 500, 600mm



FPS1/FH/GG

Fixed Height Mobile Stand

Holds 42-65", 175 lbs (79 kg) and
55" Microsoft Surface Hub

VESA Compliant:

Horizontal 200, 300, 400, 600mm
Vertical 200, 300, 400mm



WALL STANDS Electric Lift



Electric-lift, wall stand features an accessible, compact, low profile design that conceals all equipment and cabling. Easy to install and secure to any wall.

Fully Adjustable - Center of screen height range: Min - 33.3 in (846.6 mm) and Max 58.92 in (1496.6 mm) H



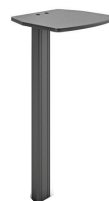
FPS1W/EL/GG Electric Lift Wall Stand

VESA COMPLIANT:
Horizontal 200 - 800mm
Vertical 200 - 500mm

WEIGHT CAPACITY:
175 lbs (79 kgs)



ACCESSORIES



Camera Shelf
FPSA/CS

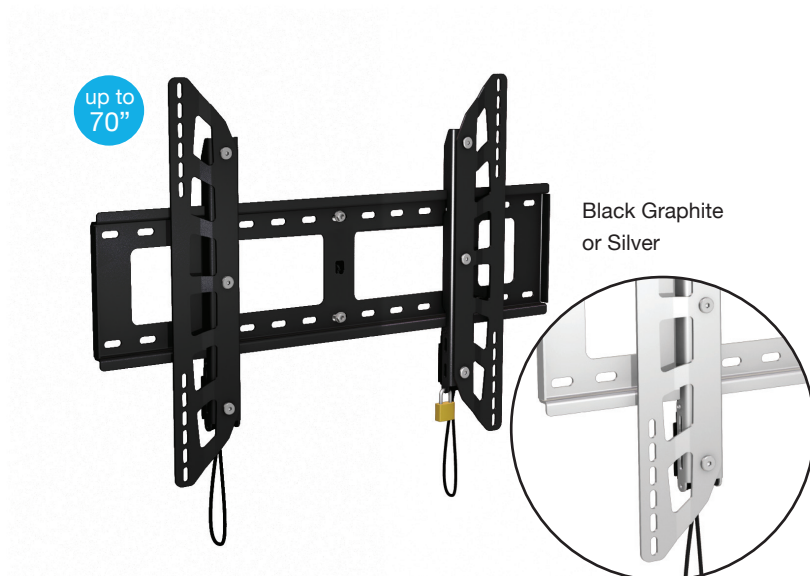


Wireless Remote
Control with Memory
FPSA/RF1

WALL MOUNTS Fixed



- Installation is easy thanks to our Lift-n-Load design
- Simple wall mounting, complete with high-grade wall and TV hardware
- Includes security lock



PL100/L Flat Mount, Large Silver

PL100/L/BK Flat Mount, Large Black

VESA COMPLIANT:
Horizontal 200 - 800mm
Vertical 200 - 500mm

WEIGHT CAPACITY:
175 lbs (79 kgs)



Easy-Touch Wall Mounts provide effortless, manual high-low adjustment hidden behind the touch screen. Features a patented spring-assisted counter balance technology.

EZ1/ML360

EZ-Touch Wall Mount

Manual Assist Lift
Range of Travel 25.6" (650mm)

VESA COMPLIANT:

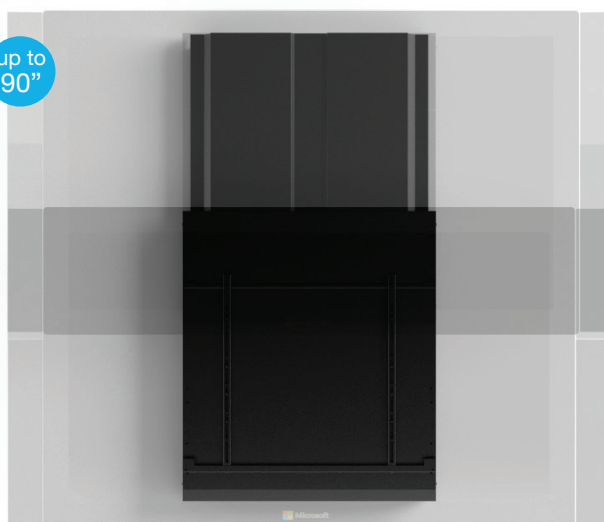
Horizontal: 400-1200mm
Vertical: 400-600mm

WEIGHT CAPACITY:

196 - 361 lbs (89 - 164 kgs)

Holds 84" Microsoft Surface Hub

up to
90"



EZ1/ML145

EZ-Touch Wall Mount Manual Assist Lift

Range of Travel 15.75" (400mm)

VESA COMPLIANT:

Horizontal: 200 - 800mm
Vertical: 100 - 440mm

WEIGHT CAPACITY:

81 - 145 lbs (37 - 66 kgs)

Holds 55" Microsoft Surface Hub

up to
65"



EZ1/MLT112

EZ-Touch Wall Mount Manual Assist Lift & Tilt

Range of Travel 15.75" (400mm)
Drafting position 60 degrees
55" Max Display

VESA COMPLIANT:

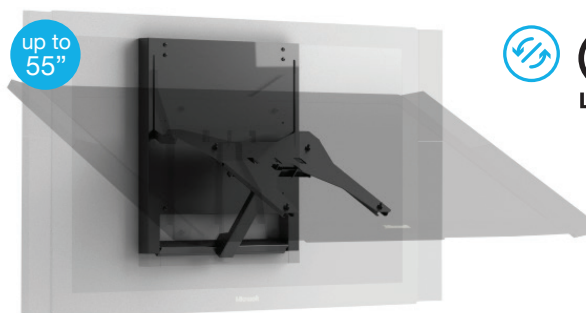
Horizontal: 400, 600mm
Vertical: 200-400mm

WEIGHT CAPACITY:

48 - 112 lbs (22 - 51 kgs)

Holds 55" Microsoft Surface Hub

up to
55"



WALL MOUNT CABINETS



ADA
COMPLIANT
SOLUTIONS

Beautiful and strong furniture solutions that integrate the touch screen. Easily attaches to any wall without structural reinforcement or cabling. It's slim design allows comfortable standing use of the touch screen while providing plenty of storage for technology enhancing accessories.



64.75"W x 31.25"H x 12"D
164 x 79 x 305mm

D1/337AM1/BL/WE 3 Bay Low Profile Cabinet

Adjustable Screen Positions

VESA COMPLIANT:
Horizontal 200 - 800mm
Vertical 200 - 500mm

WEIGHT CAPACITY:
175 lbs (79kg)



85.5"W x 31.25"H x 12"D
217 x 79 x 305mm

D1/347AM1XL/BL/WE 4 Bay Low Profile Cabinet with Single XL Display

VESA COMPLIANT:
Horizontal 400 - 1200mm
Vertical 400 - 600mm

WEIGHT CAPACITY:
300 lbs (136kg)

D1/347AM1/BL/WE 4 Bay Low Profile Cabinet with Single Display

Adjustable Screen Positions

VESA COMPLIANT:
Horizontal 200 - 800mm
Vertical 200 - 500mm

WEIGHT CAPACITY:
175 lbs (79kg)



85.5"W x 31.25"H x 12"D
217 x 79 x 305mm



D1/347AMXL/MM/GW/WH

4 Bay in Warm Gloss White with
White Solid Surface Top

*Holds 55" Cisco Spark Board
with adapter kit below:*

CA/MAC1

Cisco 55" Spark Board Adapter Kit



*Cabinets / Credenzas
are available in
several finishes*

CREDENZAS Free Standing



Salamander offers a full range of executive-level, technology supporting credenzas. Credenzas can include an integrated screen mount as well as storage for peripheral electronics and other office essentials.



**SALAMANDER
DESIGNS**

Furniture Shaped By Your Needs ®

SalamanderDesigns.com/Commercial

800.535.9910 custom@salamanderdesigns.com



MADE IN USA