

synergy 236

system

SALAMANDER
DESIGNS

Shown in Cherry Wood with Black Posts



FEATURES

- Patented, modular design
- Sturdy anodized aluminum posts support the shelves at precise heights
- Wood veneer surfaces and solid wood door frames
- Perforated door inserts permit IR signals, add ventilation and mask speakers
- Snap-on hinges fully extend doors and remove easily for better in-cabinet access
- Three infinitely adjustable shelves
- Solid wood face, media drawer
- Removable rear panel allows easy access to A/V components
- Precision leveling feet keep the cabinet level even on uneven floors

EXTERIOR

65.75" w x 21" h x 19.75" d

1670mm x 533mm x 502mm

INTERIORS

Left & Right: 19.75" w x 8.5" h x 18" d

502mm x 216 mm x 457mm

Center Opening: 19.75" w x 8.5" h x 18" d

502mm x 254 mm x 457mm

Drawer: 18.25" w x 6" h x 15" d

464 mm x 152 mm x 381 mm

CAPACITIES

Top: 350 lbs - TVs up to 70"

159 kg - TVs up to 70"

Bottom Shelf: 350 lbs

159 kg

Center Opening: 75 lbs each

34 kg

3 Adjustable Shelves: 75 lbs each

34 kg each

Maximum: 1000 lbs

363 kg

Drawer Holds: 100 lbs, 102 CDs or 52 DVDs

45 kg, 72 CDs or 22 DVDs

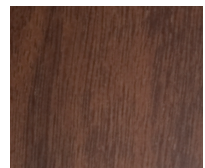
WOODS



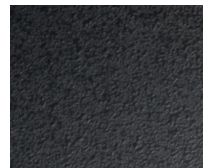
Maple



Cherry



Walnut



Black

POSTS

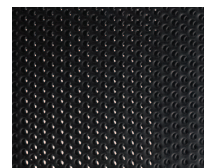


Satin Aluminum



Matte Black

DOOR INSERTS



Standard
Perforated Steel