



Royal Cognac with Cashmere Piping

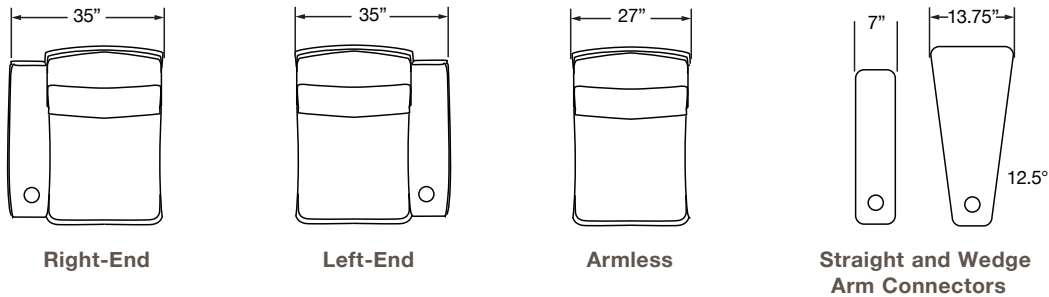
ISABELLA

Heads turn when Isabella's in the room. Updated, traditional style with fine tailoring and subtle curves beckon from all angles. Obsessive attention to detail shows in the precise stitching, tailored piping, handsome roll arms and advanced ergonomics.

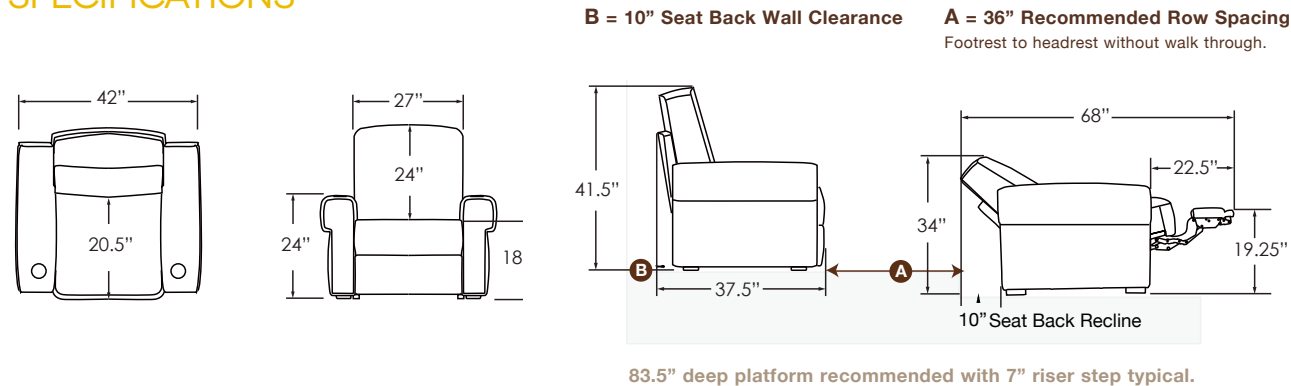


MODULES

End chairs combine with chair connectors or armless chairs for straight or wedge shaped rows.
Two armless Isabella modules can be joined without arm connectors.

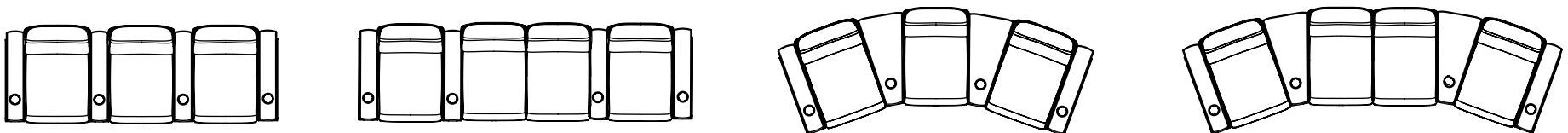


SPECIFICATIONS



Dimensional Tolerance:
Allow 1/2" (12mm) to each chair for cushion variation.

MODULAR SOLUTIONS



- Wall-away recliner mechanism allows close-to-wall positioning
- Fully-adjustable, motorized* recliner or 3-position manual recliner or non-reclining mechanism
- Leather or Microsuede covers
- Tailored, piping with optional contrast piping
- Black, silver or no cup holder

* Power Mechanism Electrical Specifications: 110 V AC, 2.0 amps nominal load, 5.0 amps max load, thermally protected



Design & Quote Custom
Theater Seating Online with our
Custom Configurator
SalamanderDesigns.com

BUILT TO LAST

RELAX...IT'S BUILT TO LAST

Our unique suspension system provides comfort and long-lasting support. It combines traditional springs and modern elastic webbing with the highest quality resilient virgin polyurethane foam. Cushions are cut to shape, wrapped with a layer of memory foam and covered with a layer of polyester padding before covering. This prevents cushions from packing down and losing their shape over time.

Seating frames are constructed of top-grade plywood that flexes and recovers without cracking. Joints are crafted with mortise-and-tenon construction for greater strength and durability. Only American-made, commercial-grade mechanisms are used, and higher gauge steel assures exceptional durability and reliability. Powered chairs have quiet motorized controls and infinitely variable stops to find the perfect position. No shortcuts...no compromises.

The key to seating ergonomics is to have the right support in the right place. Watching a movie can be an hours long experience, so proper support is essential.



DESIGN YOUR OWN



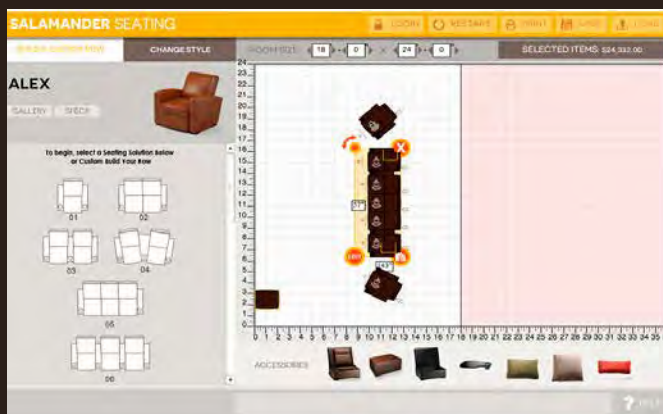
THE PERFECT SEATING SOLUTION

The innovative modular design of all Salamander seating styles means your options are endless.

Suit your space, taste and needs to enhance the comfort and enjoyment of your home theater experience in just a few steps.

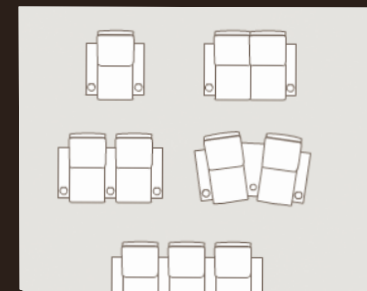
Custom design your home theater room with our user-friendly DESIGN YOUR OWN configurator,

SalamanderDesigns.com/DYO.



STYLE

Choose yours.



MODULAR

Configure loveseats, straight or curved rows of seating by combining chair modules.



MECHANISM

Opt for a quiet powered or manual mechanism and recline in ultimate comfort.



COVERS

Select from a wide selection of premium leathers and durable fabrics with stitching options.



Supply Your Own
Cover Material
Call for Details



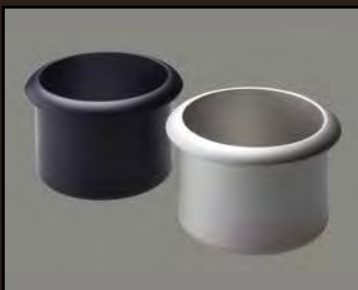
SURFACE

Swivel tablets easily install into cup holders to provide handy surfaces.



PILLOWS

Matching lumbar pillows provide additional support, available in any leather or Microsuede.



CUP HOLDER

Recessed, with option for black or silver anodized aluminum.



VIBRATION

Experience the natural percussive impact of movie sounds with Sound Transducers that produce a full range of frequency vibrations.

PREMIUM SEATING MATERIALS

Choose the Salamander Seating material that fits your style, room and lifestyle like a glove. Our durable, premium, top grain leathers and fabrics are intensely pleasing to the eye and touch.

Go to **SalamanderDesigns.com** to request swatch samples.

CUSTOM DETAILS



CONTRAST PIPING

Perfect for creating a refined, sophisticated and personalized look. Available on some styles (color combinations must be within the same leather group).

CONTRAST STITCHING

Accentuate the fine detail on your custom handmade seating. Available on some styles (ivory or gray stitch, dependant on color selected).

PREMIUM LEATHER LUSTRA

Full hides of supple, top-grain steer leather are carefully selected, dyed and top coated for added protection. Lustra's soft hand and classic character are reminiscent of Old English bridle.

PREMIUM LEATHER ROYAL

Fine Italian, aniline dyed leather with a soft and supple hand. Fine graining enhances Royal's beauty and gives it a warm, cozy appeal. Colors exhibit an earthy hue reminiscent of a fine pair of worn chaps.

Whiskey

Hershey

Harness Brown

Olive

Iron Gate

Castle Gate

Cashmere

Cognac

True Black

Cinnamon

Midnight Blue

Safari

Alabaster

PREMIUM LEATHER

VINTAGE

Full-grain, aniline-dyed steer hides are selected for an excellent soft hand and drape. The age-distressed look, natural markings and color variants give each Vintage chair a unique, authentically rustic look.

PREMIUM LEATHER

LUXE

American dairy cowhide is meticulously selected for a natural, even, pebbled grain. Luxurious looking with excellent durability, Luxe is recommended for the contract, hospitality and residential markets.

Acorn

Bark

Hazelnut

Oatmeal

Pewter

Oyster

Adirondack

Merlot

Mushroom

Go to **SalamanderDesigns.com**
to request swatch samples.

Onyx

Mariner

TOP GRAIN LEATHER EARTH

Ultra-supple, top-grain cowhide with excellent durability, deep color and incredibly soft touch. Easy to clean, Earth leathers are an ideal choice for families with children or pets. Available in a range of colors.

Snow
(Piping Only)

Canyon

Chocolate

Redrock

Desert

Sand

Terrain

Stout

Cabernet

Eclipse

Ruby

Limestone

Charcoal

Pistachio

Fog

Anchor

FABRIC

SERENE

Serene offers the best of all worlds: a soft to the touch, durable fabric that drapes well and wears even better. 100% Polyester, Serene is an easily cleaned seating material that has the wear resistance you'll appreciate. Competitively priced and available in a wide range of stylish, on trend colors, Serene is one of our customers favorite textile seating materials.

FABRIC VELUTO

Soft to the touch, like modern day velvet. Reminiscent of old time theaters, Veluto takes a classic style and amps it up with a contemporary look and feel for a perfect blend of comfort and style.

FABRIC MICROSUEDE

Exceptional value, attractive looks and growing in popularity. This 100% Micro denier fabric's soft feel, smooth nap, durability and easy cleaning make it an ideal choice for today's busy lifestyles.

Slate

Root Beer

Flax

Mocha

Espresso

Stone

Moss

Putty

Go to **SalamanderDesigns.com**
to request swatch samples.

Brandy

Black

Sage