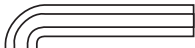


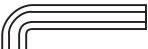


# CHAMELEON RACK MOUNT KIT

1x 5/32" Hex Key - (400-080)



1x 1/8" Hex Key - (400-070)



12x



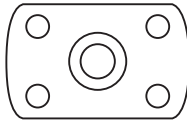
(300-518)  
3/8" Button Head  
Screw

2x

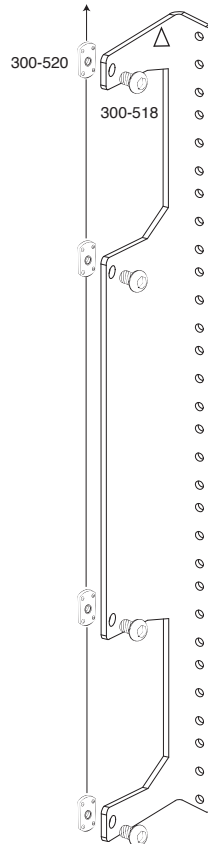
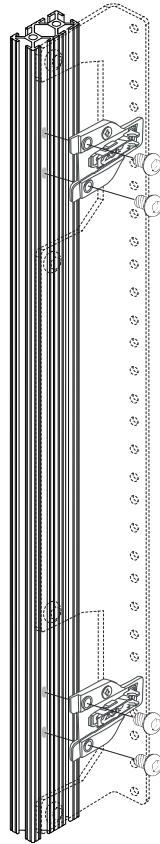


(301-360)  
3/4" Mounting Screw

12x



(300-520) - Flat Nut



## OPTION: INSTALLING GEAR FORWARD

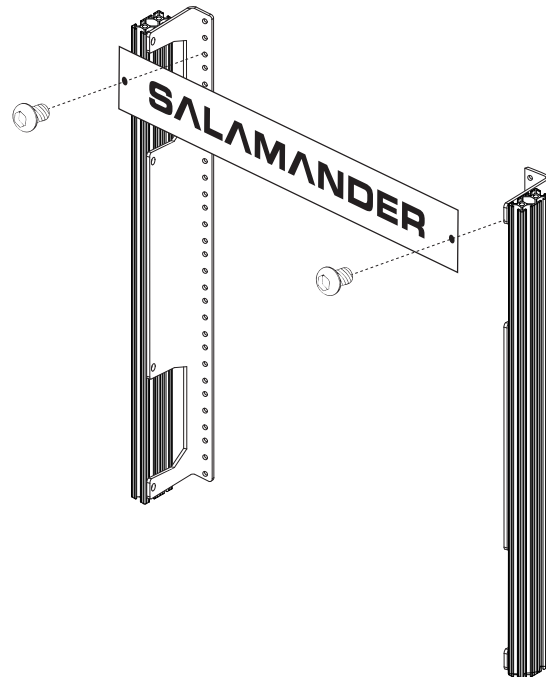
Rack rails may also be installed with the flange forward in applications the door is not desired and additional cabinet depth is needed.

Note: The most efficient method to access the vertical extrusions for this installation is to place the empty cabinet on it's back and remove the feet and bottom panel, it will also be necessary to remove the 2 side panel screws, hinge bases, and any installed shelf pegs.

- A.** Place the 3/8" Button Head Screw (300-518) in the holes shown and loosely screw to Flat-nut (300-520).
- B.** Slide Rack Mount Rail into position with the Flat Nuts sliding into the channel as shown. After bracket is in position tighten all screws with hex key.

△ Note: 15U rack mount rails have a triangle that must be located at the top of the rail when installed.

- C.** Re-attach door hinge bases.
- D.** For 15U, Install header panel at the top of the rack rails.



## Limited Warranty

For five full years Salamander Designs Ltd. will repair or replace, at our option, any product defective in materials or craftsmanship. Salamander Designs Ltd. will not be responsible for any damage to or destruction of other equipment consequential to our equipment failure. Defective product must be given Return Authorization and is to be returned to the factory prepaid, in the original carton and packing material. Any damage incurred in a shipment not in original packaging shall be the responsibility of the owner. Warranty repairs will be returned prepaid, via UPS within the continental U.S.A. only.

[www.SalamanderDesigns.com](http://www.SalamanderDesigns.com)

800-535-5659